

**100% GAP FILLER
FOR STEEL & BRIDGE CONSTRUCTION**

MM1018

The Liquid Shim Plate

DIAMANT MM1018 is the advanced innovative solution to compensate the gap might occurs in steel and bridge construction with effective and efficient way. The material will be 100% form-fits and force lock the gaps to improve stability, vibration dampening and protect against corrosion as well. Since developed in 1990, DIAMANT MM1018 have been certified by Germany Civil Construction Institute – DIBt and successfully applied in more than 1000 project worldwide.



The advantages of **DIAMANT MM1018**:

- 100% form-fit and force lock the gap
- Effective and efficient. Not required machining process
- High compressive strength up to 160 N/mm²
- Full loadable after 24 hours
- Resistant against weather, sea environment and chemical (salt, oil, grease, etc.)

PRODUCT DESCRIPTION

MM1018 Liquid Shim Plate is a binder-system and highly filled with steel particles. Through the liquid/ putty viscosity, it has the ability to be injected into the gaps, so it is easy to molds in to the individual shape of the gap or fill the imperfection, 100% form-fit, simple and quick. MM1018 will be fully cured After 24h and it does not need any further support or service to be use with full load.

PROPERTIES

- 100% form-fits and force locked
- High compressive strength, up to 160 N/mm²
- Full loadable after 24 hours
- Vibration dampening
- Temperature resistance (-40° C – 90° C)
- Protect against corrosion and weather resistant, incl. sea environment.
- Resistance against chemical (oil, grease, acid, etc.)
- Very less shrinkage
- Not required machining process.

STEEL & BRIDGE CONSTRUCTION

APPLICATION AREAS

- Installation Steel girder, Steel beam
- Bridge bearing installation / replacement
- Relining imperfection surface in guideways, or support columns
- Fill the gap on steel structure connection
- Silo and tower installation.

PRODUCT VARIANT

- MM1018 Putty Version #1436
- MM1018 Fluid Version #1866
- DIAMANT EP-Flow #2482

TECHNICAL DATA

MM1018	PUTTY #1436	FLUID #1866
APPLICATION (IDEAL GAP SIZE)	0-140 mm	0-140 mm
FRICITION	>0.5	>0.5
ELASTICITY MODULUS [N/mm ²]	10,000	10,000
COMPRESIVE STRENGTH [N/mm ²]	110	161
SHIRINKAGE [mm/m]	0.84 mm/m	0.35 mm/m
CREEP COEFFICIENT F182, 7days	2.1	1.1
THERMAL EXPANSION COEFFICIENT [1/K]	2.5E - 05	2E - 05
DENSITY [g/cm ³]	2.66	2.66
POT LIFE (+20°C)[MIN]	20 (± 20%)	89 (± 20%)
CURING TIME (+20°C)[STD]	24 Hours	24 Hours
SHORE-D HARDNESS	89	89

EP-FLOW

The Stronger Grouting

DIAMANT EP-FLOW is a fast curing and high compressive flowable epoxy grouting that use to fill and bind the gap and cavities. Ideally use to fill the gap, cavities in concrete to concrete / concrete to steel.

The advantages of **EP-FLOW** : extremely flowable to molds into an individual shape; self-levelling and fast curing also has high compressive as well.



APPLICATION AREA

- Steel and wind tower structure
- Reinforce connection
- Bridge bearing installation
- Steel structure dan concrete support

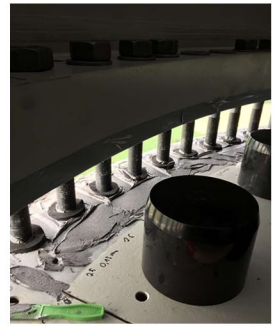
CHARACTERISTIC

- High Loads compressive
- Self-leveling
- Very Flowable
- Fast curing time, loadable after 8 hours in 20° C
- Strong bonding
- Resistant against corrosion, weather and sea environment as well

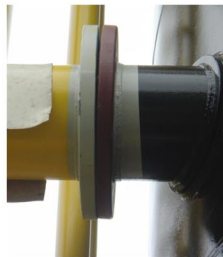
TECHNICAL DATA

Technical data	Test method	Symbol	Value
Density [g/cm ³]			1.85
Shore-D hardness	DIN ES ISO 868		80
Compressive strength [N/mm ²] (h)		f _c	57
Viscosity [mPas]	DIN EN ISO 3219:1994	v	9,700
Processing time T15TK [min]			120
Curing at 20°C [h]			16
Temperature resistance [°C]			100
Mixing ratio by weight			100 : 5.8
Grain size [mm]	EN ISO 14688		0 - 0.48
Layer thickness [mm]			>10
Modulus of elasticity [N/mm ²]	EN 13412:2006		8,500

REFERENSI

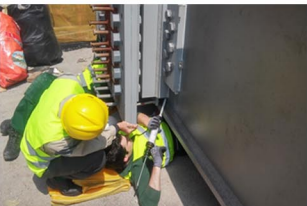
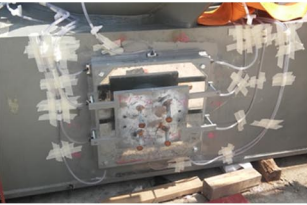
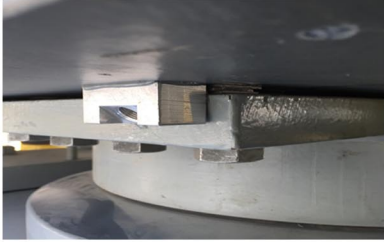


Filling the gap and force lock the connection between the tower segment and wind turbine machine.



Filling the gap between ladder connection and tower segment

REFERENSI



Filling the gap that occurred in anywhere between the steel structure and bearing installation, even on limited space

Our Contact

Diamant Polymer Indonesia

PT. Pancaran Karya Anugrah

Gedung Office 8, Lt. 18-A
Jl. Jendral Sudirman Kav. 52-53
Jakarta 12190 - Indonesia

P. +62 (0) 21 3049 0162 || F. +62 (0) 21 3049 0163
sales@diamant-polymer.id

www.diamant-polymer.id

Please fill our form by scanning the QR code below
to give you the best solution for your problem



or

you can use the link below by clicking the link or
copy the link to your browser

<https://forms.gle/VssJXFJTDtvJKQtj7>



THE METAL-POLYMER SPECIALIST